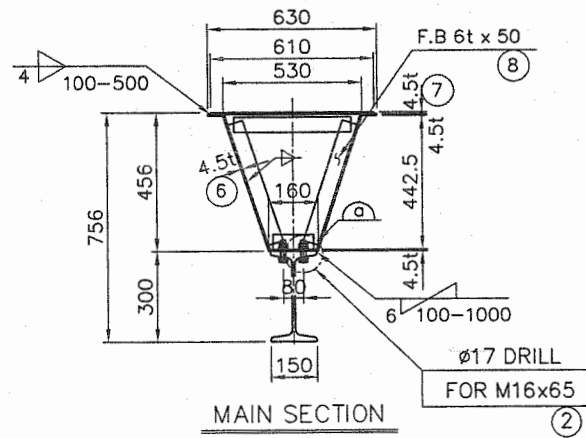
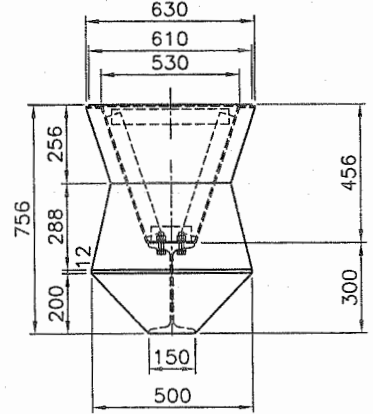
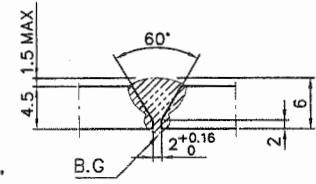
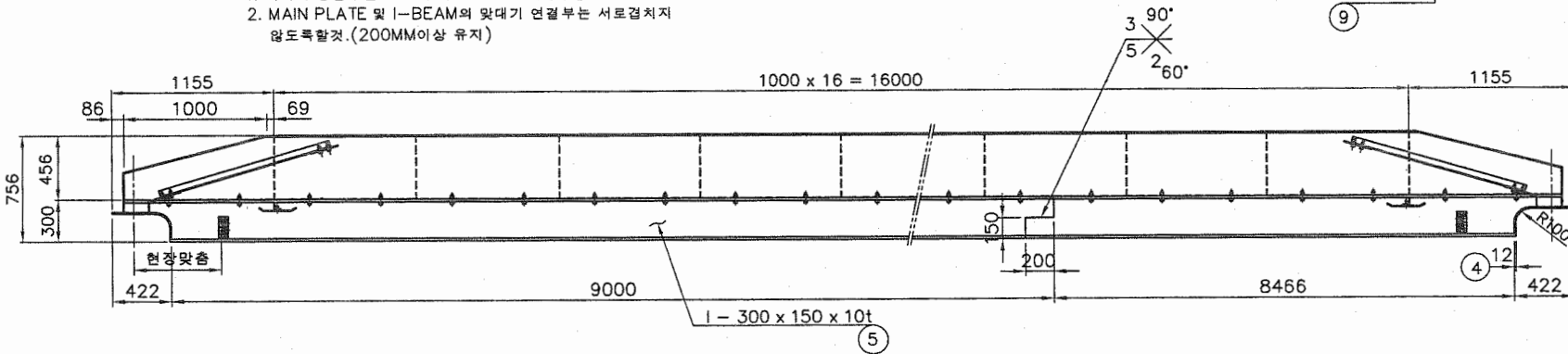
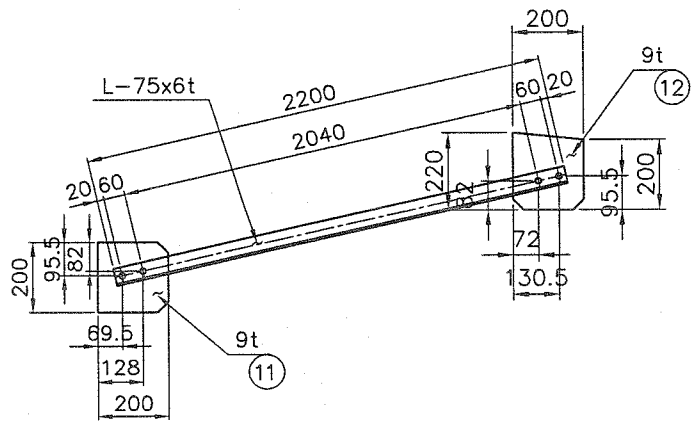


NOTE
 1. 지시의 용접부는 모재 두께의 70% 연속용접함것.
 2. MAIN PLATE 및 I-BEAM의 맞대기 연결부는 서로걸쳐지 않도록함것.(200MM이상 유지)

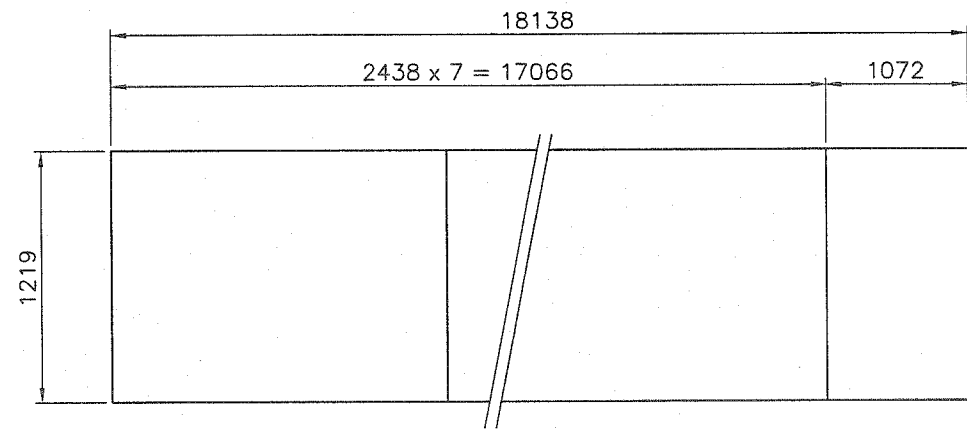
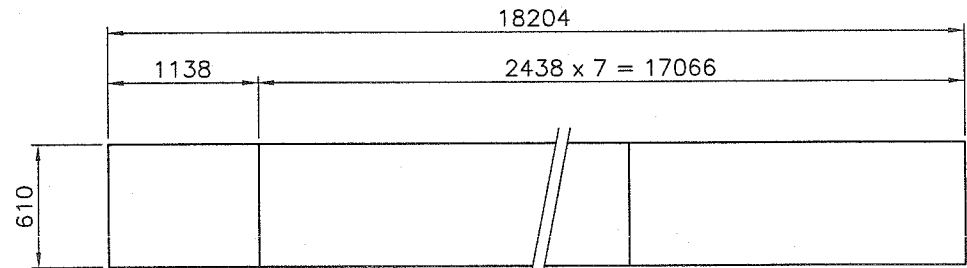


TOTAL WEIGHT : 2580 KG

NO.	DESCRIPTION	MT'L	QTY	WEIGHT KG	REMARK
12	H.T B/N 2-P/W	F10T	16		M16x65L
11	9t x 200x200	SS400	4	11	
10	9t x 200x200	SS400	4	11	
9	L-75x6t-2200L	SS400	4	60	
8	F.B 50x6t x 6000	SS400	4.5	66	
7	4.5t x 610 x 18204	SS400	1	392	
6	4.5t x 1219 x 18138	SS400	1	781	
5	I-300x150x10/18.5t	SS400	1	1188	18138L
4	12t x 500 x 610	SS400	2	57	
3	6t x 288 x 500	SS400	2	14	
2	H.T B/N 8T/W 2-P/W	F10T	40		M16x65L
1	H.T B/N 5T/W 2-P/W	F10T	12		M16x65L



⑩ DETAIL



CUTTING PLAN

NO.	DATE	REVISION	NO.	DATE	REVISION	NOTE
1			1			
2			2			
3			3			

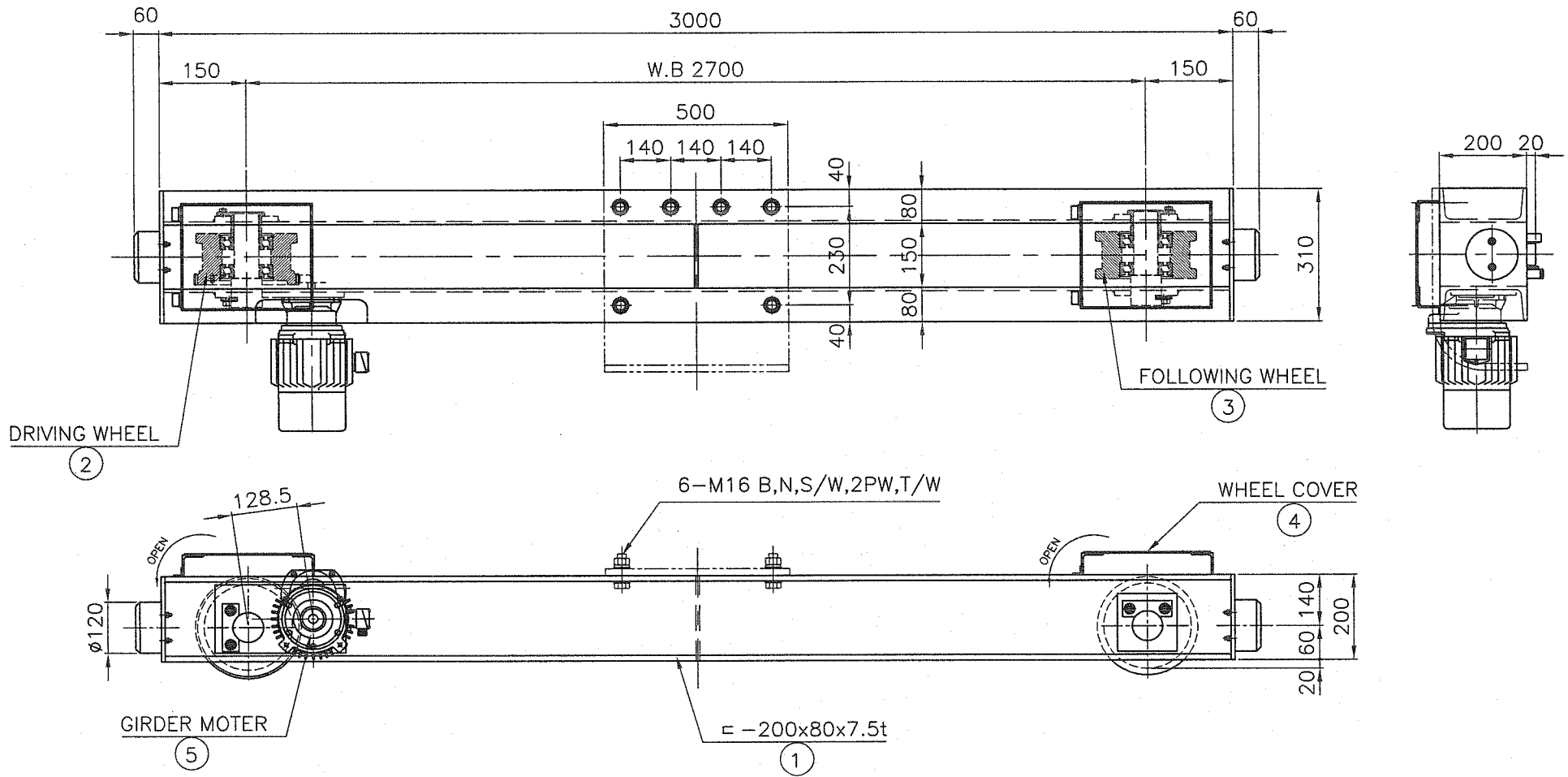
제작사



DRAWN BY	윤성복	DATE	2017. 12.
DESIGNED BY	김태준		
CHECKED BY	김철영		
APPROVED BY			

SUBJECT
CUTTING PLAN
PROJECT
2 TON x SPAN 18 M 000

SCALE	N/S	DATE	2017. 12.
PROJECT NO.	JD-2-18	DRAWING NO.	01



$$V = 1650 \times 3.14 \times 0.16 \times 16 / 48 \times 1 / 16.3 = 17 \text{ m/min}$$

(M = 4)

NOTE

1. 지시없는 용접부는 압축모재 두께의 70%로 연속용접할것.
2. 절단면은 그라인딩 할것.
3. 거더와 새들을 체결하는 볼트 홀은 동시에 가공할것.
4. 볼트의 길이는 너트를 체결하고 나사산이 3산 이상이 남을것.
5. 거더와 체결하는 볼트는 HIGH TENSION BOLT로 사용할것.
6. 거더와 체결하는 새들의 대각편차는 10M당 1mm, 최대 3mm이내일것.

SPECIFICATION		
SPEED	17	M/MIN
MOTOR	0.75	KW x 4 P
POWER SOURCE	AC Ø 3 380 V 60 Hz	
REMARK		

WEIGHT = 290 KG

NO.	DESCRIPTION	MT'L	QT'Y	WEIGHT KG	REMARK
5	GEARED MOTOR	PUR-	1	30	
4	WHEEL COVER	SS400	2	25	
3	FOLLOWING WHEEL	S45C	1	22	
2	DRIVING WHEEL	S45C	1	26	
1	SADDLE FRAME	SS400	1	187	

NO.	DATE	REVISION	NO.	DATE	REVISION	NOTE
1			1			
2			2			
3			3			

제작사



DROWN BY 윤원복
 DESIGNED BY 김태훈
 CHECKED BY 김창영
 APPROVED BY

Ø 160

SADDLE ASS'Y

SCALE N/S DATE 2017. 12.
 PROJECT NO. JD-2-18 DRAWING NO. 01A