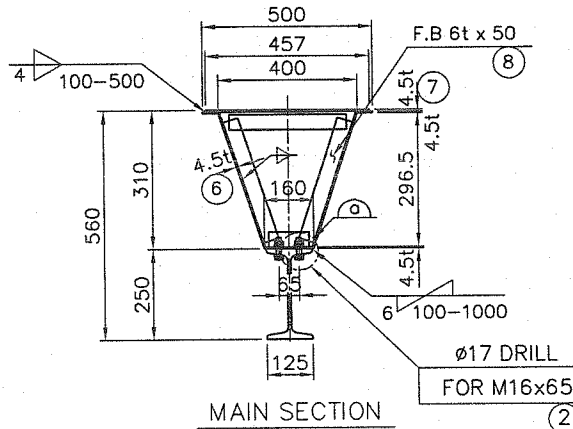
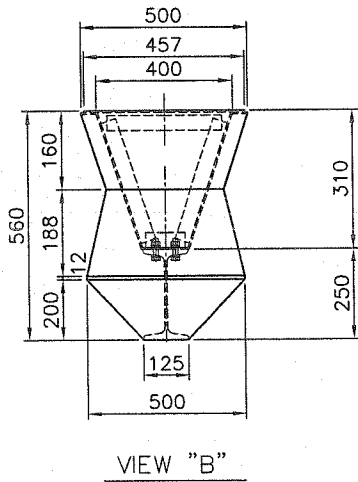
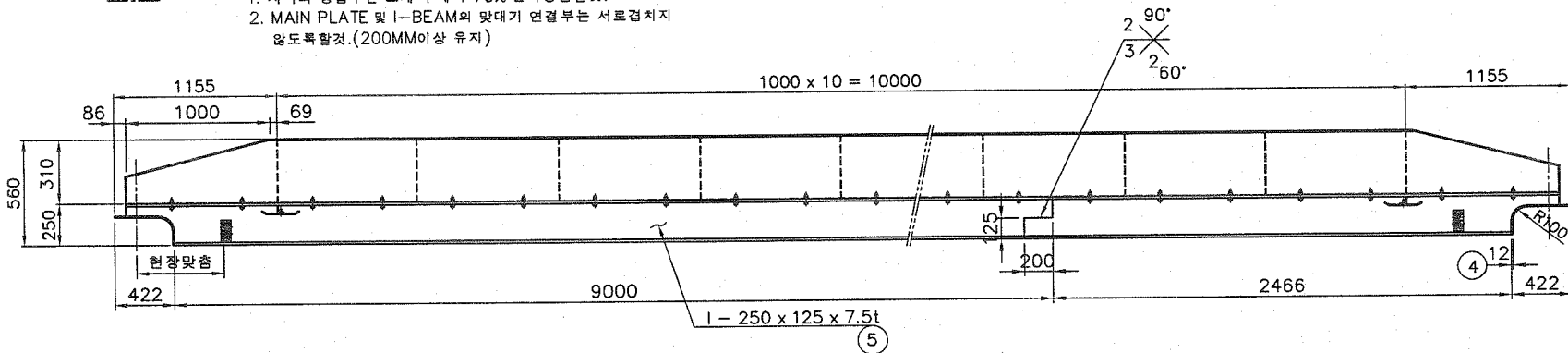


NOTE

1. 지시의 용접부는 모재 두께의 70% 연속용접할것.
2. MAIN PLATE 및 I-BEAM의 맞대기 연결부는 서로겹치지 않도록할것. (200MM이상 유지)



TOTAL WEIGHT : 1150 KG

NO.	DESCRIPTION	MT'L	QTY	WEIGHT KG	REMARK
8	F.B 50x6tx6000	SS400	2.1	31	
7	4.5tx457x12164	SS400	1	196	
6	4.5tx914x12138	SS400	1	392	
5	I-250x125x7.5/12.5t	SS400	1	465	12138L
4	12tx500x610	SS400	2	57	
3	6tx188x500	SS400	2	9	
2	H.T B/N 8T/W 2-P/W	F10T	28		M16x65L
1	H.T B/N 5T/W 2-P/W	F10T	12		M16x65L

NO.	DATE	REVISION	NO.	DATE	REVISION	NOTE
1			1			
2			2			
3			3			

제조사



DROWN BY
DESIGNED BY
CHECKED BY
APPROVED BY

문성복
김익준
김한영

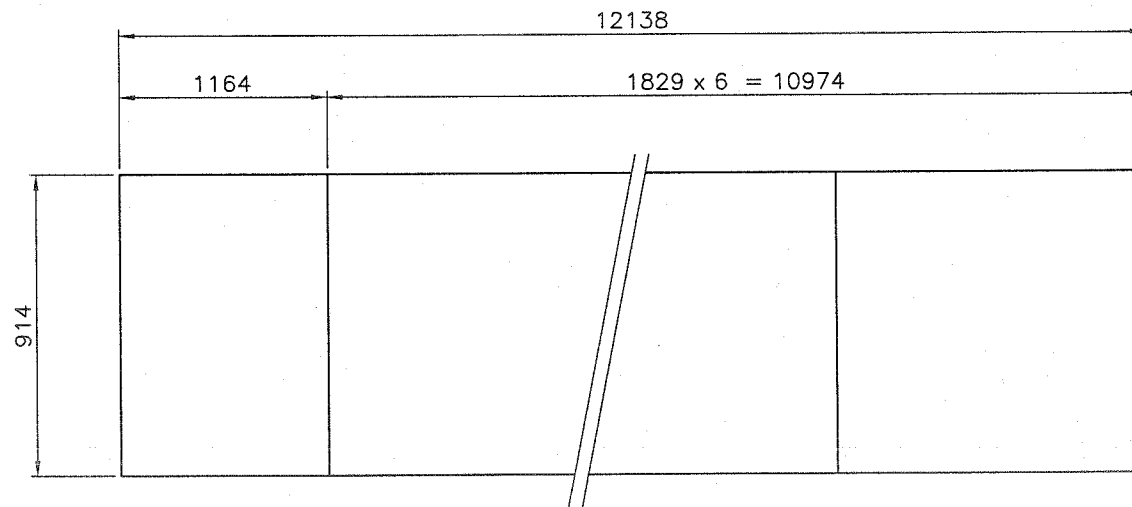
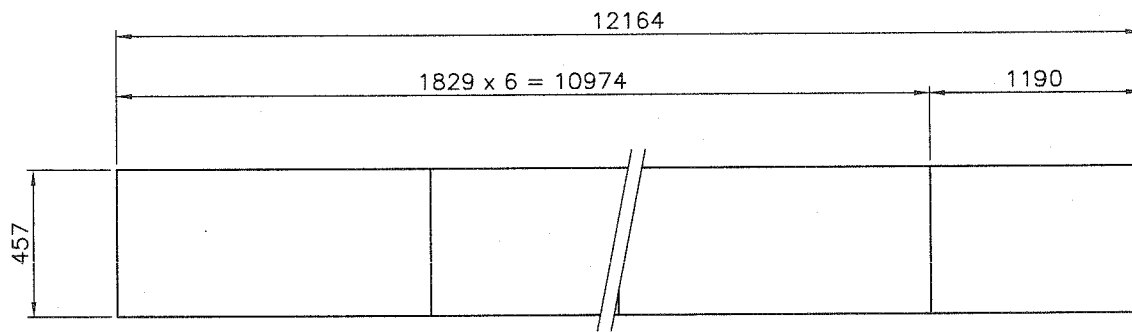
2017.11.11

SUBJECT
PROJECT

SCALE
DATE
PROJECT NO.
DRAWING NO.

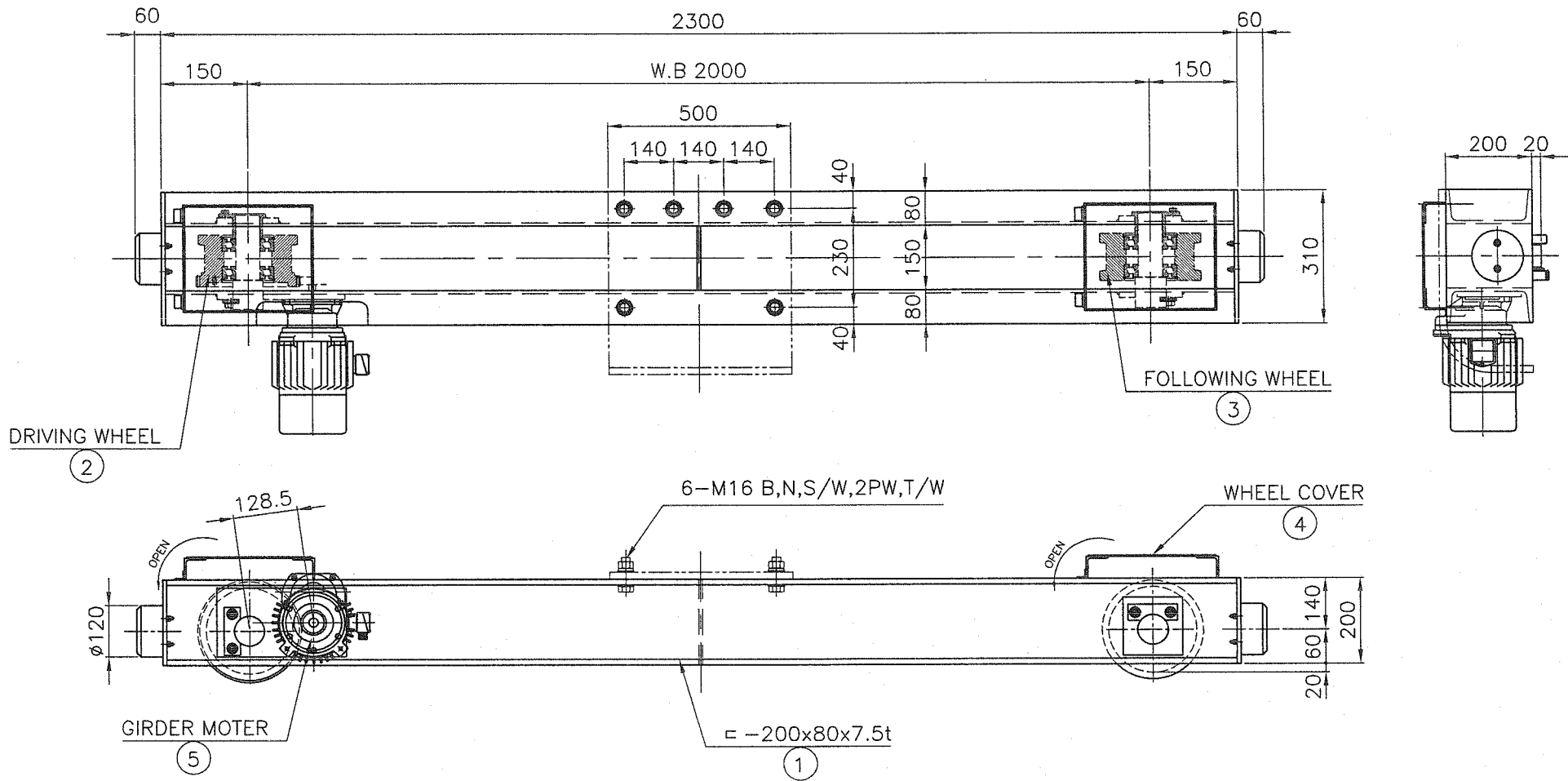
DETAIL OF SINGLE GIRDER
2 TON x SPAN 12 M 000

N/S
2017. 11.
JD-2-12
0/A



CUTTING PLAN

NO.	DATE	REVISION	NO.	DATE	REVISION	NOTE	제조사	DRAWN BY	윤성복	DATE	SUBJECT	SCALE	N/S	DATE
1			1					DESIGNED BY	김태준	2017. 11.	CUTTING PLAN			
2			2			CHECKED BY		김항범	PROJECT	2 TON x SPAN 12 M 000	PROJECT NO.		DRAWING NO.	
3			3			APPROVED BY					JD-2-12	01B		



$$V = 1650 \times 3.14 \times 0.16 \times 16 / 48 \times 1 / 16.3 = 17 \text{ m/min}$$

(M = 4)

- NOTE**
1. 지시없는 용접부는 양용모재 두께의 70%로 연속용접할것.
 2. 절단면은 그라인딩 할것.
 3. 거더와 새들을 체결하는 볼트 홀은 동시에 가공할것.
 4. 볼트의 길이는 너트를 체결하고 나사산이 3산 이상이 남을것.
 5. 거더와 체결하는 볼트는 HIGH TENSION BOLT로 사용할것.
 6. 거더와 체결하는 새들의 대각편차는 10M당 1mm, 최대 3mm이내일것.

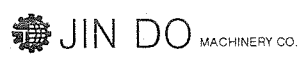
SPECIFICATION		
SPEED	17	M/MIN
MOTOR	0.75	KW x 4 P
POWER SOURCE	AC Ø 3 380 V 60 Hz	
REMARK		

WEIGHT = 250 KG

NO.	DESCRIPTION	MT'L	QT'Y	WEIGHT KG	REMARK
5	GEARED MOTOR	PUR-	1	30	
4	WHEEL COVER	SS400	2	25	
3	FOLLOWING WHEEL	S45C	1	22	
2	DRIVING WHEEL	S45C	1	26	
1	SADDLE FRAME	SS400	1	147	

NO.	DATE	REVISION	NO.	DATE	REVISION	NOTE
1			1			
2			2			
3			3			

제작사



DRAWN BY: 홍성복
 DESIGNED BY: 김태훈
 CHECKED BY: 김현영
 APPROVED BY: [Signature]

Ø 160

SADDLE ASS'Y

SCALE: N/S
 DATE: 2017. 11.
 PROJECT: JD-2-12
 DRAWING NO.: 01A