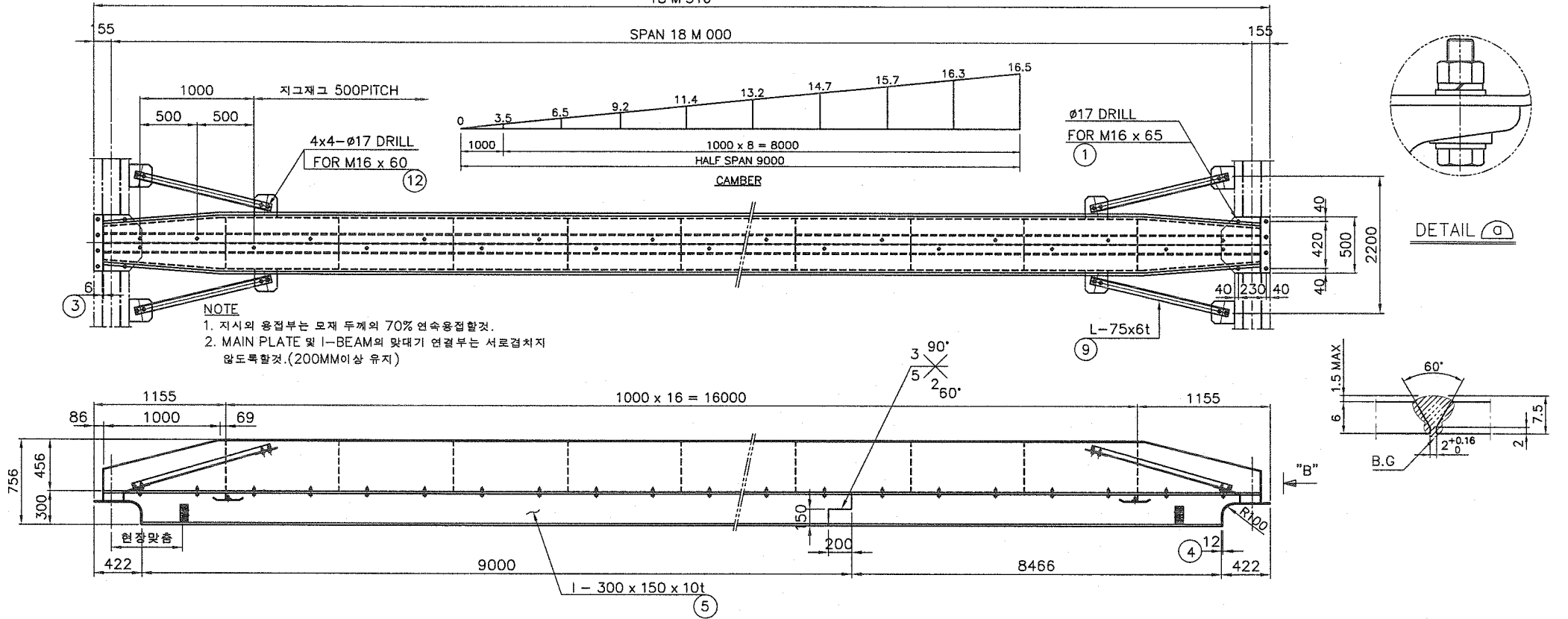


18 M 310

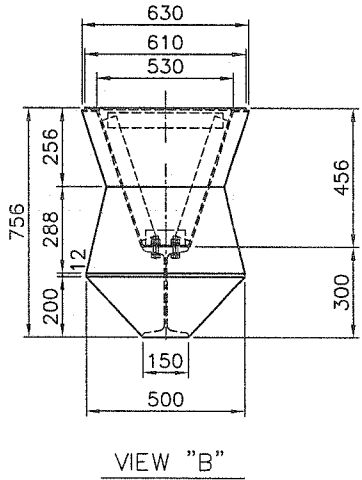
SPAN 18 M 000



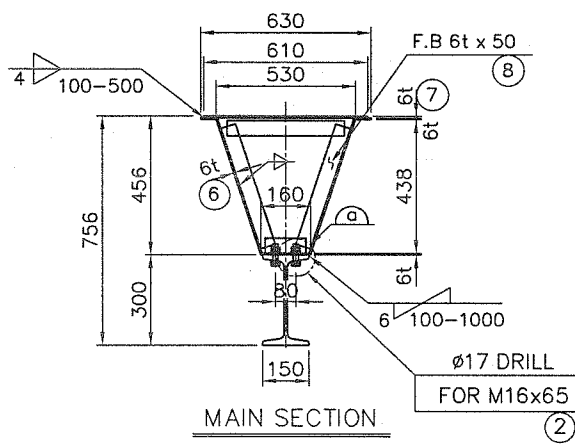
NOTE

1. 지시의 용접부는 모재 두께의 70% 연속용접할것.
2. MAIN PLATE 및 I-BEAM의 맞대기 연결부는 서로겹쳐지 않도록할것.(200MM이상 유지)

DETAIL a



VIEW "B"



MAIN SECTION

TOTAL WEIGHT : 2970 KG

NO.	DESCRIPTION	MT'L	QTY	WEIGHT KG	REMARK
12	H.T B/N 2-P/W	F10T	16		M16x65L
11	9tx200x200	SS400	4	11	
10	9tx200x200	SS400	4	11	
9	L-75x6t-2200L	SS400	4	60	
8	F.B 50x6tx6000	SS400	4.5	65	
7	6tx610x18204	SS400	1	523	
6	6tx1219x18138	SS400	1	1041	
5	I-300x150x10/18.5t	SS400	1	1188	18138L
4	12tx500x610	SS400	2	57	
3	6tx288x500	SS400	2	14	
2	H.T B/N 8T/W 2-P/W	F10T	40		M16x65L
1	H.T B/N 5T/W 2-P/W	F10T	12		M16x65L
NO.	DESCRIPTION	MT'L	QTY	WEIGHT KG	REMARK

NO.	DATE	REVISION	NO.	DATE	REVISION	NOTE
1			1			
2			2			
3			3			

제작사



DRAWN BY
DESIGNED BY
CHECKED BY
APPROVED BY

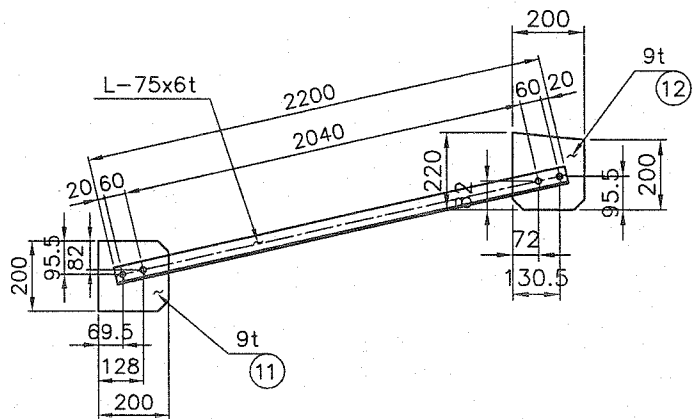
문상학
김태환
김원형

SUBJECT
PROJECT

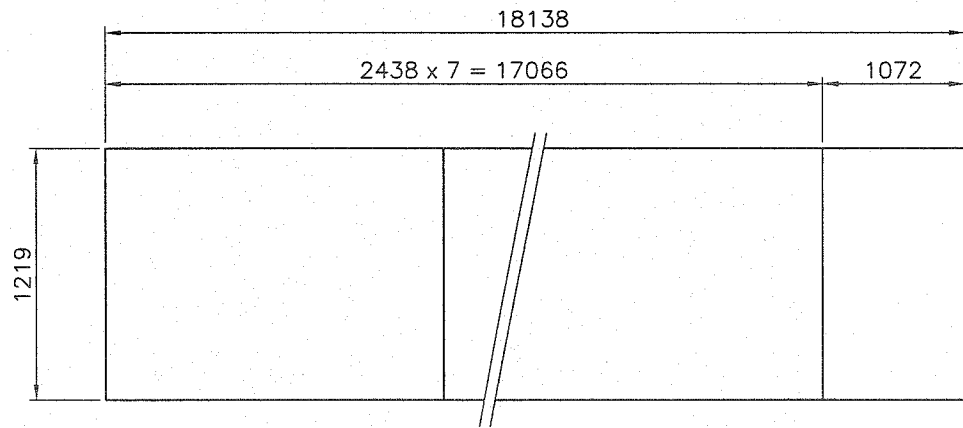
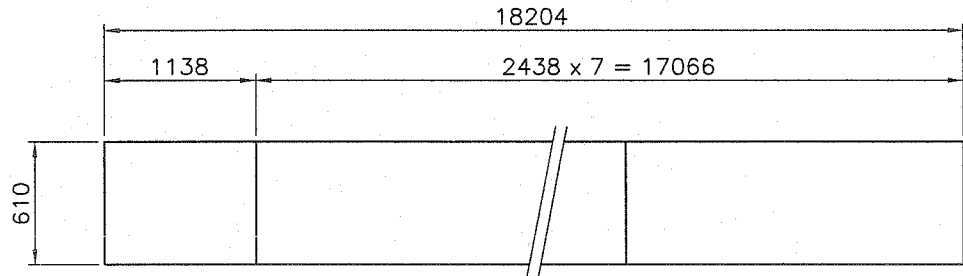
SCALE
DATE

DETAIL OF SINGLE GIRDER
3 TON x SPAN 18 M 000

N/S
2017. 12.
PROJECT NO.
DRAWING NO.



⑩ DETAIL



CUTTING PLAN

NO.	DATE	REVISION	NO.	DATE	REVISION	NOTE
1			1			
2			2			
3			3			

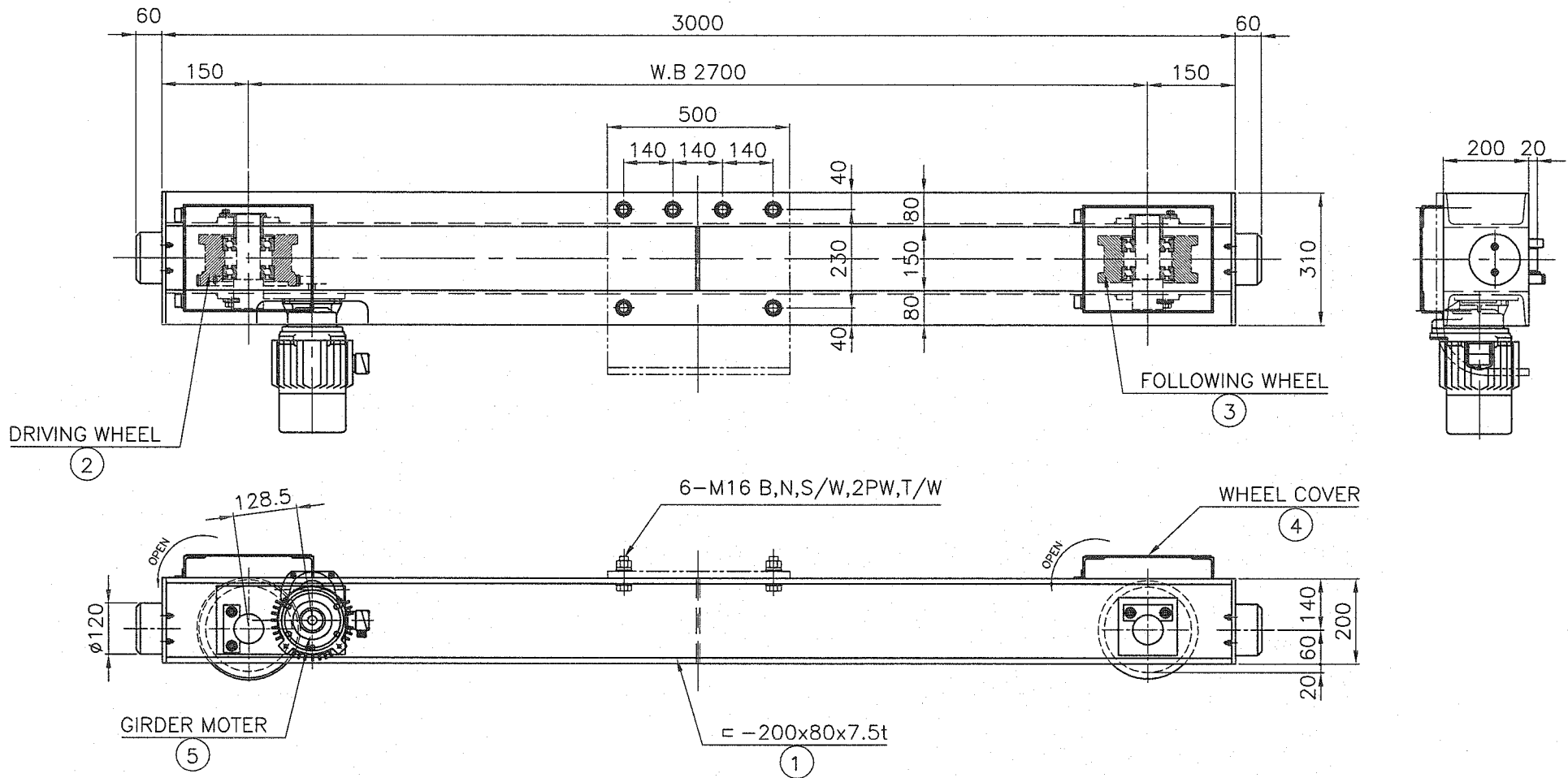
제작사



DRAWN BY	윤성학	Mr
DESIGNED BY	김택준	Asst
CHECKED BY	김원형	Asst
APPROVED BY		

SUBJECT	CUTTING PLAN
PROJECT	3 TON x SPAN 18 M 000

SCALE	N/S	DATE	2017. 12.
PROJECT NO.	JD-3-18	DRAWING NO.	01B



$$V = 1650 \times 3.14 \times 0.16 \times 16 / 48 \times 1 / 16.3 = 17 \text{ m/min}$$

(M = 4)

NOTE

1. 지시없는 용접부는 양용모재 두께의 70%로 연속용접할것.
2. 절단면은 그라인딩 할것.
3. 거더와 새들을 체결하는 볼트 홀은 동시에 가공할것.
4. 볼트의 길이는 너트를 체결하고 나사산이 3산 이상이 남을것.
5. 거더와 체결하는 볼트는 HIGH TENSION BOLT로 사용할것.
6. 거더와 체결하는 새들의 대각편차는 10M당 1mm, 최대 3mm 이내일것.

SPECIFICATION		
SPEED	17	M/MIN
MOTOR	0.75	KW x 4 P
POWER SOURCE	AC Ø 3 380 V 60 Hz	
REMARK		

WEIGHT = 290 KG

NO.	DESCRIPTION	MT'L	QT'Y	WEIGHT KG	REMARK
5	GEARED MOTOR	PUR-	1	30	
4	WHEEL COVER	SS400	2	25	
3	FOLLOWING WHEEL	S45C	1	22	
2	DRIVING WHEEL	S45C	1	26	
1	SADDLE FARM	SS400	1	187	

NO.	DATE	REVISION	NO.	DATE	REVISION	NOTE
1			1			
2			2			
3			3			

제작사

JIN DO MACHINERY CO.

DROWN BY
DESIGNED BY
CHECKED BY
APPROVED BY

문형욱
김태훈
김현영

1/2
1/2
2/2

1/2
1/2
2/2

1/2
1/2
2/2

1/2
1/2
2/2

1/2
1/2
2/2

1/2
1/2
2/2

1/2
1/2
2/2

1/2
1/2
2/2

1/2
1/2
2/2

1/2
1/2
2/2

1/2
1/2
2/2

1/2
1/2
2/2

1/2
1/2
2/2

1/2
1/2
2/2

1/2
1/2
2/2

1/2
1/2
2/2

1/2
1/2
2/2

1/2
1/2
2/2

1/2
1/2
2/2

1/2
1/2
2/2

1/2
1/2
2/2

1/2
1/2
2/2

1/2
1/2
2/2

1/2
1/2
2/2

1/2
1/2
2/2

1/2
1/2
2/2

1/2
1/2
2/2

1/2
1/2
2/2

SUBJECT

Ø 160

SCALE

N/S

DATE

2017. 12.

PROJECT

SADDLE ASS'Y

PROJECT NO.

JD-3-18

DRAWING NO.

01A