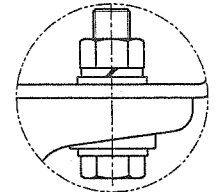
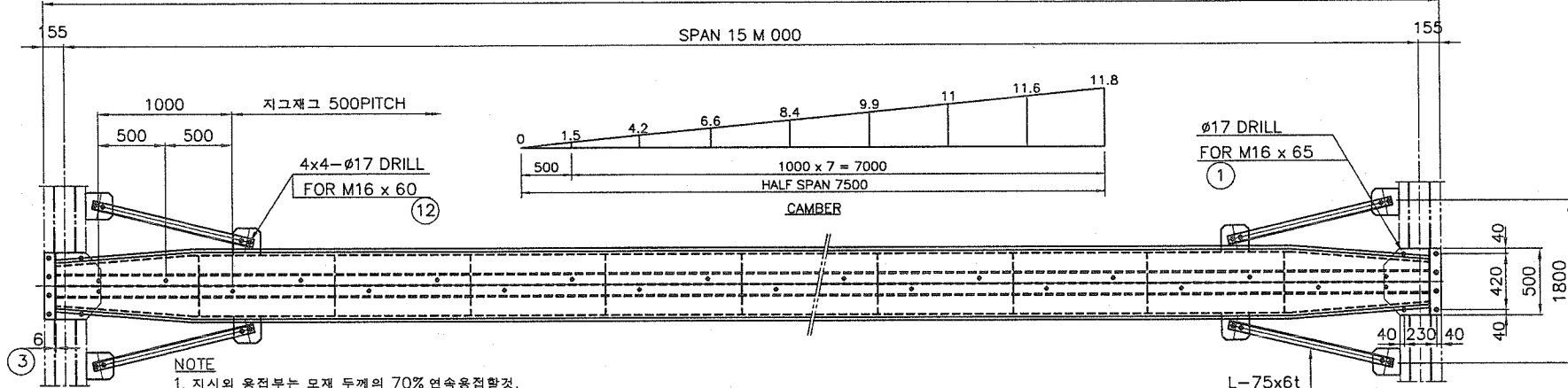


15 M 310

SPAN 15 M 000

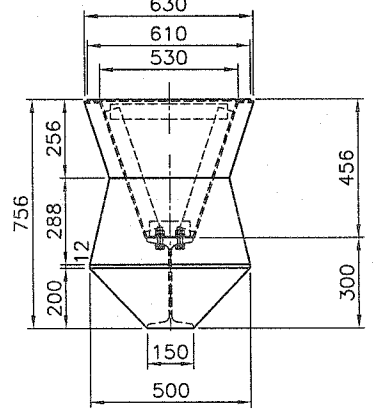
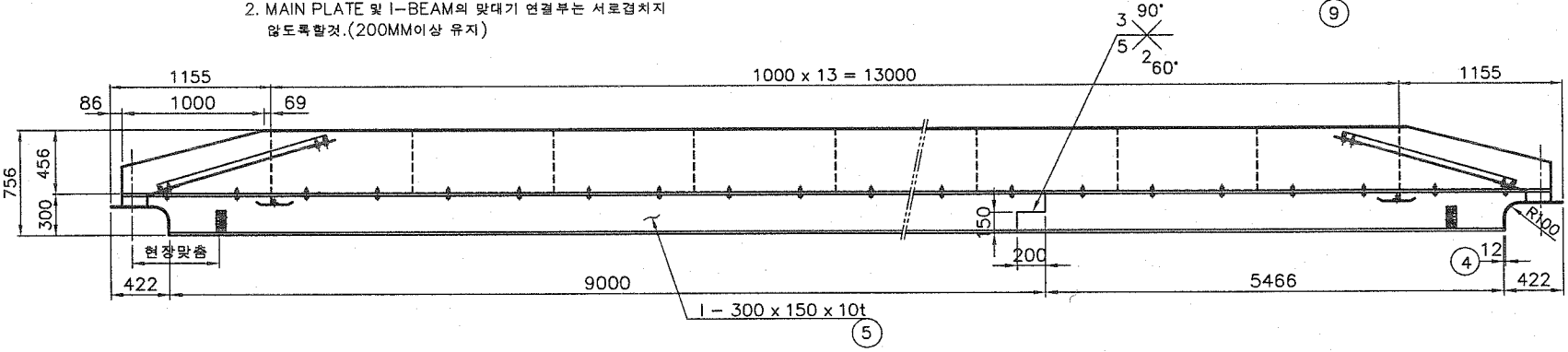
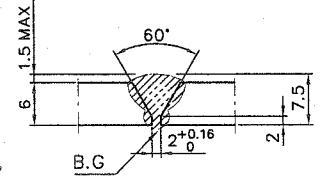


DETAIL a

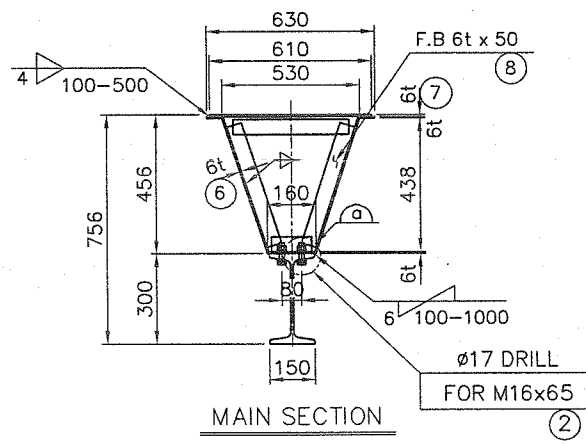


NOTE

1. 지시의 용접부분은 모재 두께의 70% 연속 용접함것.
2. MAIN PLATE 및 I-BEAM의 맞대기 연결부분은 서로 겹치지 않도록함것.(200MM이상 유지)



VIEW "B"



MAIN SECTION

TOTAL WEIGHT : 2500 KG

| NO. | DESCRIPTION | MT'L | QTY | WEIGHT KG | REMARK |
|-----|---------------------|-------|-----|-----------|---------|
| 12 | H.T B/N 2-P/W | F10T | 16 | | M16x65L |
| 11 | 9tx200x200 | SS400 | 4 | 11 | |
| 10 | 9tx200x200 | SS400 | 4 | 11 | |
| 9 | L-75x6t-1800L | SS400 | 4 | 49 | |
| 8 | F.B 50x6tx6000 | SS400 | 3.7 | 60 | |
| 7 | 6tx610x15204 | SS400 | 1 | 437 | |
| 6 | 6tx1219x15138 | SS400 | 1 | 869 | |
| 5 | I-300x150x10/18.5t | SS400 | 1 | 992 | 15138L |
| 4 | 12tx500x610 | SS400 | 2 | 57 | |
| 3 | 6tx288x500 | SS400 | 2 | 14 | |
| 2 | H.T B/N 8'T/W 2-P/W | F10T | 34 | | M16x65L |
| 1 | H.T B/N 5'T/W 2-P/W | F10T | 12 | | M16x65L |

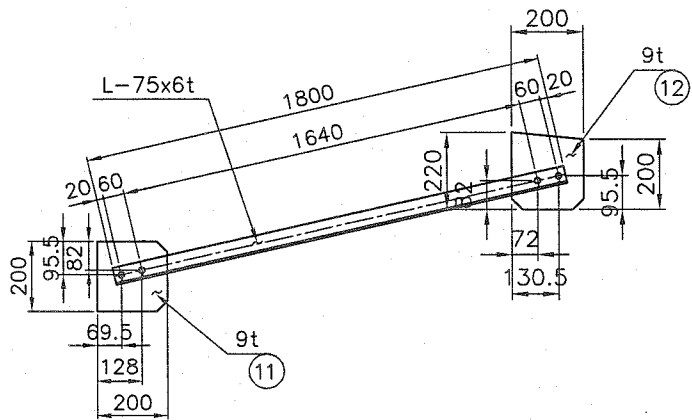
| NO. | DATE | REVISION | NO. | DATE | REVISION | NOTE |
|-----|------|----------|-----|------|----------|------|
| 1 | | | 1 | | | |
| 2 | | | 2 | | | |
| 3 | | | 3 | | | |

제작사

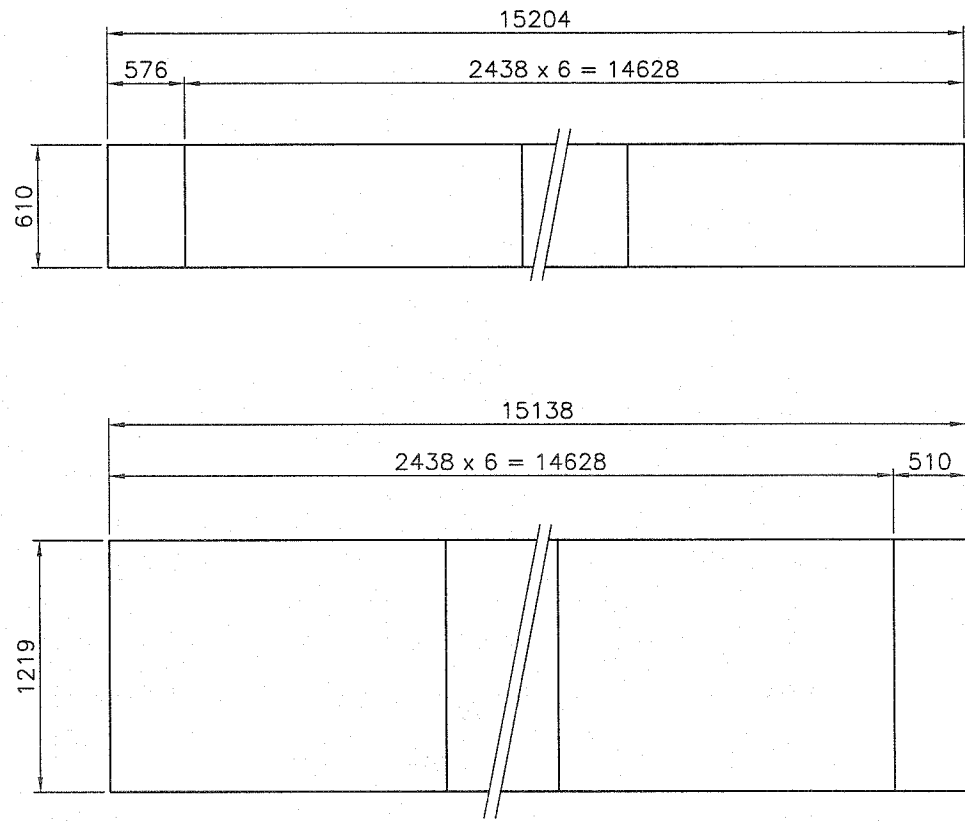


| | | | | |
|-------------|-----|----|---------|-------------------------|
| DRAWN BY | 관성복 | 25 | SUBJECT | DETAIL OF SINGLE GIRDER |
| DESIGNED BY | 김태훈 | 25 | PROJECT | 5 TON x SPAN 15 M 000 |
| CHECKED BY | 김한영 | 25 | | |
| APPROVED BY | | | | |

SCALE N/S DATE 2017. 12. PROJECT NO. JD-5-15 DRAWING NO. 01A



⑩ DETAIL



CUTTING PLAN

| NO. | DATE | REVISION | NO. | DATE | REVISION | NOTE |
|-----|------|----------|-----|------|----------|------|
| 1 | | | 1 | | | |
| 2 | | | 2 | | | |
| 3 | | | 3 | | | |

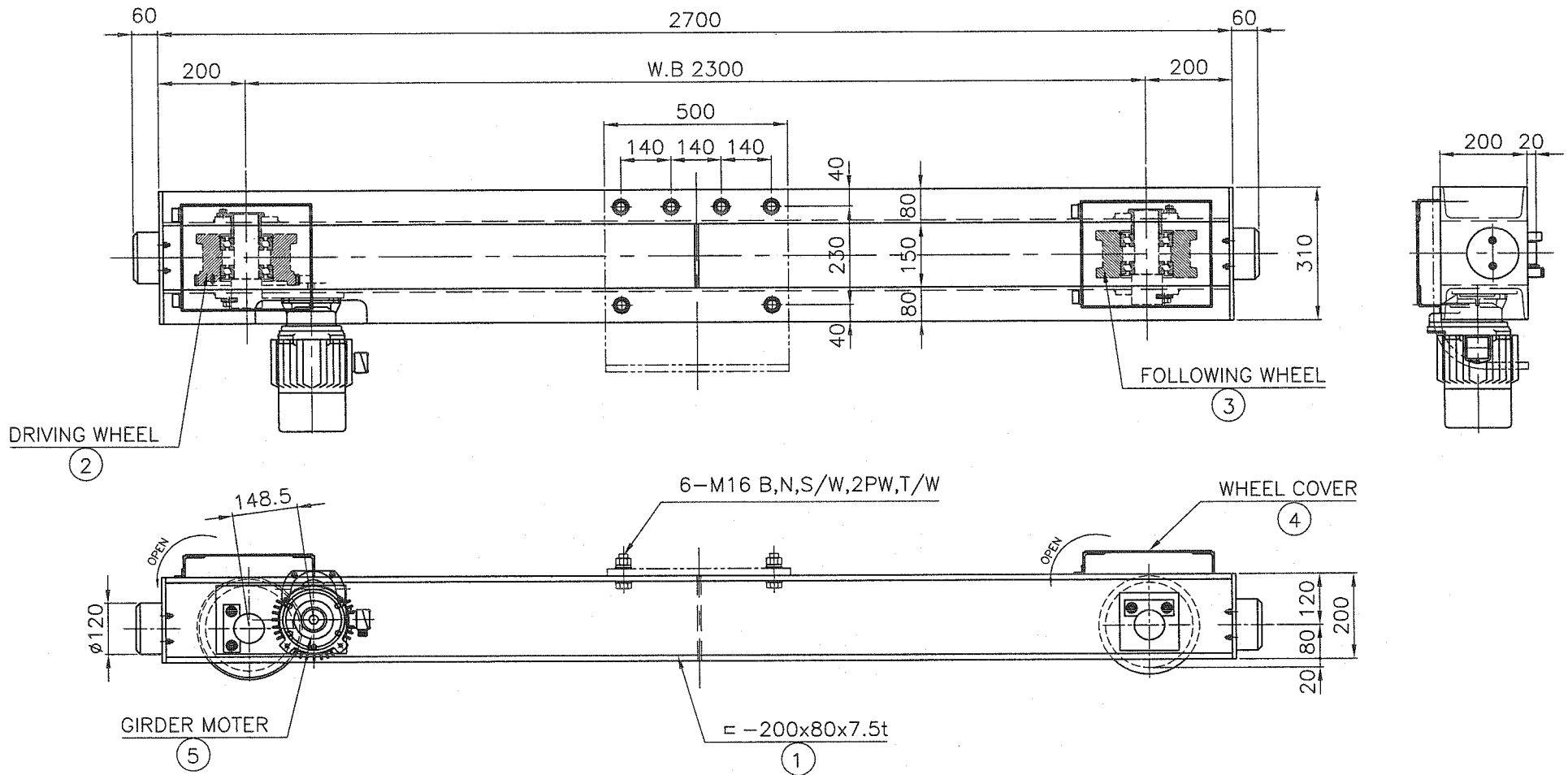
제작사



| | | |
|-------------|-----|------|
| DRAWN BY | 윤상혁 | 2017 |
| DESIGNED BY | 김태훈 | 2017 |
| CHECKED BY | 김현영 | 2017 |
| APPROVED BY | | |

| SUBJECT | SCALE | DATE |
|-----------------------|-------------|-------------|
| CUTTING PLAN | N/S | 2017. 12. |
| PROJECT | PROJECT NO. | DRAWING NO. |
| 5 TON x SPAN 15 M 000 | JD-5-15 | 01B |

| | |
|-------------|-------------|
| PROJECT NO. | DRAWING NO. |
| JD-5-15 | 01B |



$$V = 1650 \times 3.14 \times 0.2 \times 16 / 58 \times 1 / 16.3 = 18 \text{ m/min}$$

(M = 4)

NOTE

1. 지시없는 용접부는 얇음모재 두께의 70%로 연속용접할것.
2. 절단면은 그라인딩 할것.
3. 거더와 새들을 체결하는 볼트 홀은 동시에 가공할것.
4. 볼트의 길이는 너트를 체결하고 나사산이 3산 이상이 남을것.
5. 거더와 체결하는 볼트는 HIGH TENSION BOLT로 사용할것.
6. 거더와 체결하는 새들의 대각편차는 10M당 1mm, 최대 3mm이내일것.

| SPECIFICATION | | |
|---------------|-------------------------|----------|
| SPEED | 18 | M/MIN |
| MOTOR | 0.75 | KW x 4 P |
| POWER SOURCE | AC ϕ 3 380 V 60 Hz | |
| REMARK | | |

WEIGHT = 290 KG

| NO. | DESCRIPTION | MT'L | QT'Y | WEIGHT KG | REMARK |
|-----|-----------------|-------|------|-----------|--------|
| 5 | GEARED MOTOR | PUR- | 1 | 30 | |
| 4 | WHEEL COVER | SS400 | 2 | 25 | |
| 3 | FOLLOWING WHEEL | S45C | 1 | 35 | |
| 2 | DRIVING WHEEL | S45C | 1 | 40 | |
| 1 | SADDLE FARM | SS400 | 1 | 160 | |

| NO. | DATE | REVISION | NO. | DATE | REVISION | NOTE |
|-----|------|----------|-----|------|----------|------|
| 1 | | | 1 | | | |
| 2 | | | 2 | | | |
| 3 | | | 3 | | | |

제조사



DRAWN BY: 윤성복
 DESIGNED BY: 김태준
 CHECKED BY: 김한필
 APPROVED BY:

SUBJECT: ϕ 200
 PROJECT: SADDLE ASS'Y

SCALE: N/S
 DATE: 2017. 12.
 PROJECT NO.: JD-5-15
 DRAWING NO.: 01A