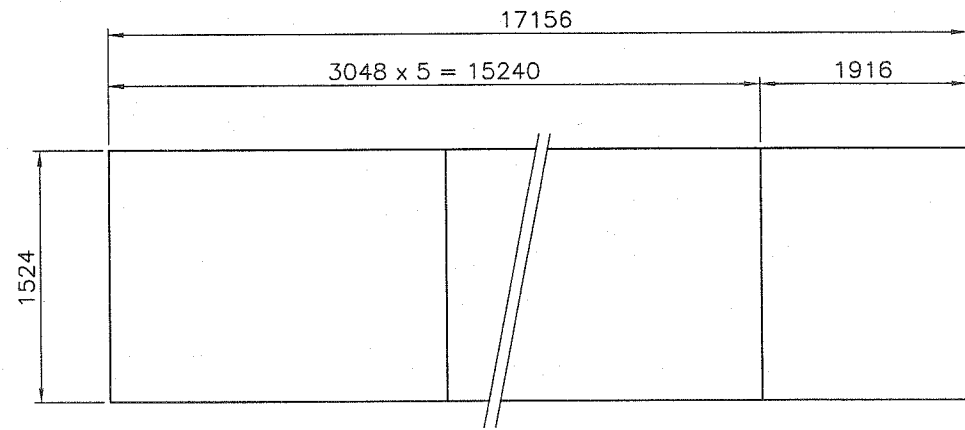
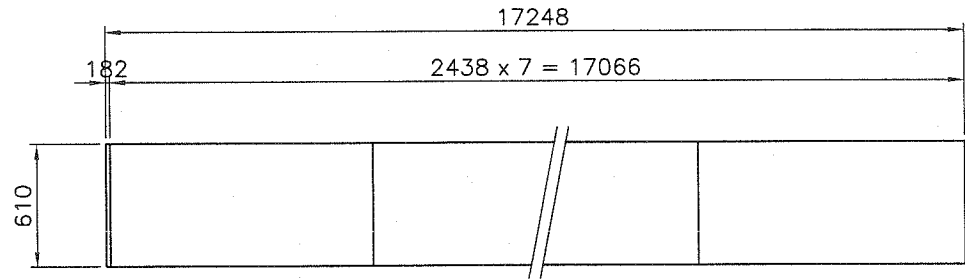
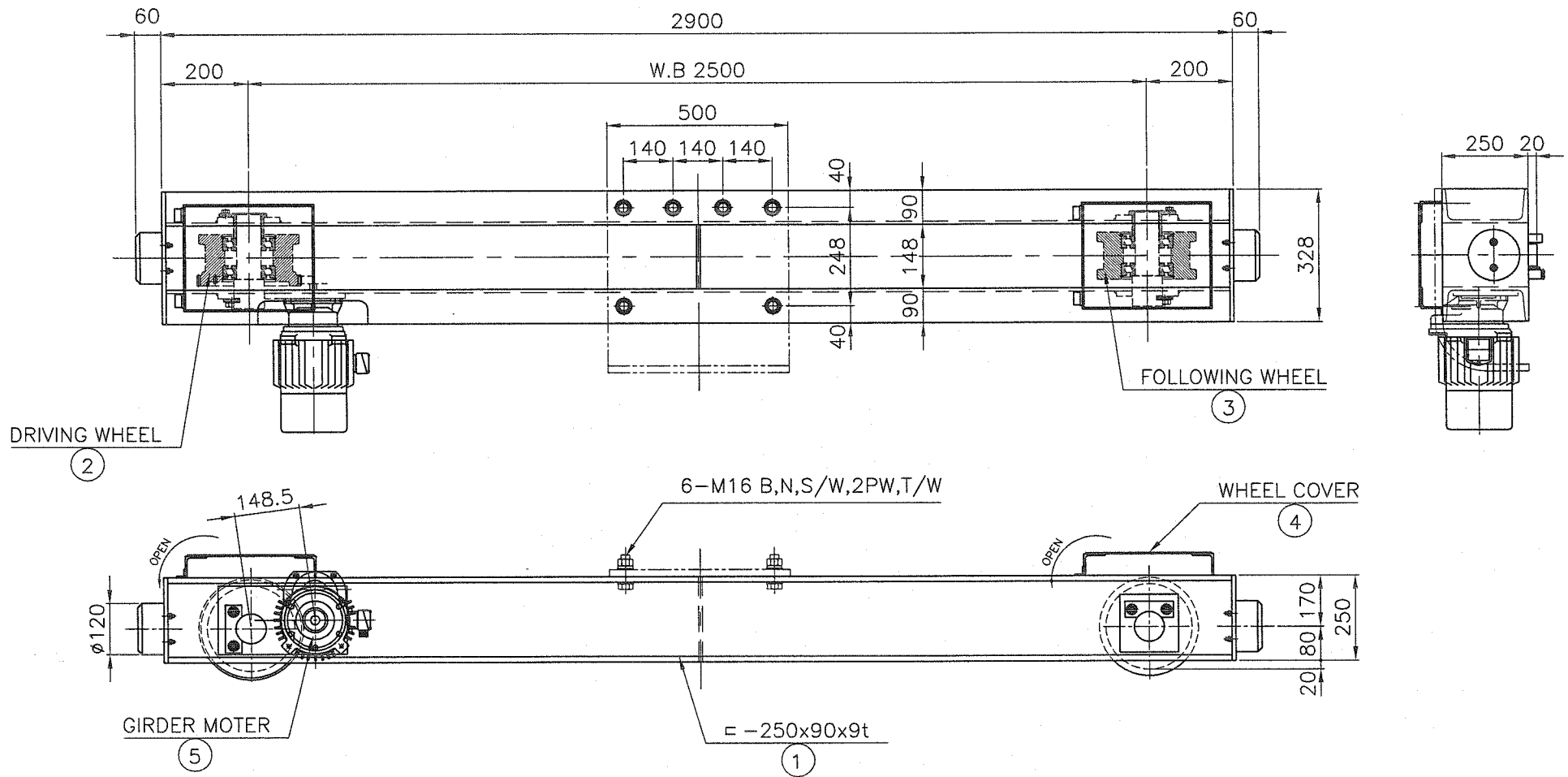


⑩ DETAIL



CUTTING PLAN

NO.	DATE	REVISION	NO.	DATE	REVISION	NOTE	제조사	DRAWN BY	윤성복	2017	SUBJECT	CUTTING PLAN	SCALE	N/S	DATE
1			1				JIN DO MACHINERY CO.	DESIGNED BY	김태훈	2017	PROJECT	5 TON x SPAN 17 M 000			2017. 12.
2			2					CHECKED BY	김정형	2017					
3			3					APPROVED BY							



$$V = 1650 \times 3.14 \times 0.2 \times 16 / 58 \times 1 / 16.3 = 18 \text{ m/min}$$

(M = 4)

**NOTE**

1. 지시없는 용접부는 얇음모재 두께의 70%로 연속용접할것.
2. 절단면은 그라인딩 할것.
3. 거더와 새를 체결하는 볼트 홀은 동시에 가공할것.
4. 볼트의 길이는 너트를 체결하고 나사산이 3산 이상이 남을것.
5. 거더와 체결하는 볼트는 HIGH TENSION BOLT로 사용할것.
6. 거더와 체결하는 새의 대각편차는 10M당 1mm, 최대 3mm이내일것.

SPECIFICATION		
SPEED	18	M/MIN
MOTOR	0.75	KW x 4 P
POWER SOURCE	AC Ø 3 380 V 60 Hz	
REMARK		

WEIGHT = 360 KG

NO.	DESCRIPTION	MT'L	QT'Y	WEIGHT KG	REMARK
5	GEARED MOTOR	PUR-	1	30	
4	WHEEL COVER	SS400	2	20	
3	FOLLOWING WHEEL	S45C	1	35	
2	DRIVING WHEEL	S45C	1	40	
1	SADDLE FARMER	SS400	1	235	

NO.	DATE	REVISION	NO.	DATE	REVISION	NOTE
1			1			
2			2			
3			3			

제각사



DRAWN BY 윤성복  
 DESIGNED BY 김태준  
 CHECKED BY 김현영  
 APPROVED BY

SCALE  
 PROJECT

Ø 200  
 SADDLE ASS'Y

DATE  
 PROJECT NO.  
 DRAWING NO.