

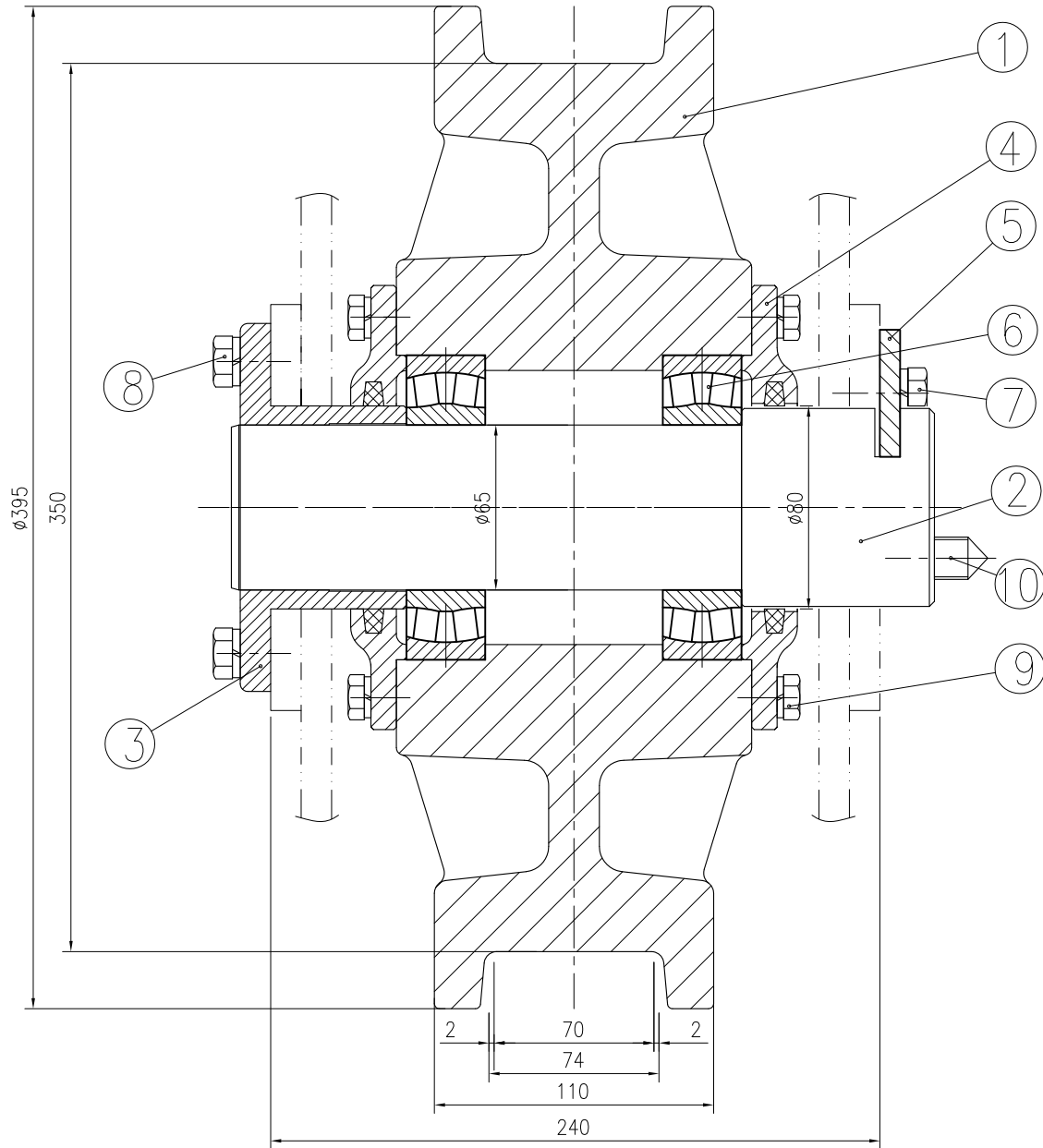
10	GREASE NIPPLE	PUR-CHASE	2		PT 1/4"
9	BOLT.SW	4T	24		M10x30 <sup>L</sup> x25 <sup>S</sup>
8	BOLT.SW	4T	8		M12x30 <sup>L</sup> x20 <sup>S</sup>
7	BOLT.SW	4T	4		M20x35 <sup>L</sup> x25 <sup>S</sup>
6	BEARING	PUR-CHASE	4		#22213
5	KEY PLATE	SS41	2		JD-S350-K
4	BEARING COVER	SS41 OR FC20	4		JD-S350-BC
3	COLLAR	FCD40	2		JD-S350-C
2	SHAFT	S45CN	2		JD-S350-S
1	DRIVING WHEEL	SCMn2A	2		JD-S350-D
	ASS'Y OF DRIVING WHEEL	-	2		

NO	DESCRIPTIONS	MT'L	SET	SET	UNIT	TOTAL	REMARKS
			QTY		WEIGHT	KG	
DATE : 2014. 02		SCALE : N/S		DRAWING No. :		JD-350-D	
DRAWN BY J. H. GWAK		DESIGNED BY J,H,GWAK		CHECKED BY		APPROVED BY D,J,SIN	
PROJECT TITLE TRAVELLING DRIVING DRAWING				DRAWING TITLE ø350			



JINDO HOIST CRANE.CO.LTD

3 1:1.5

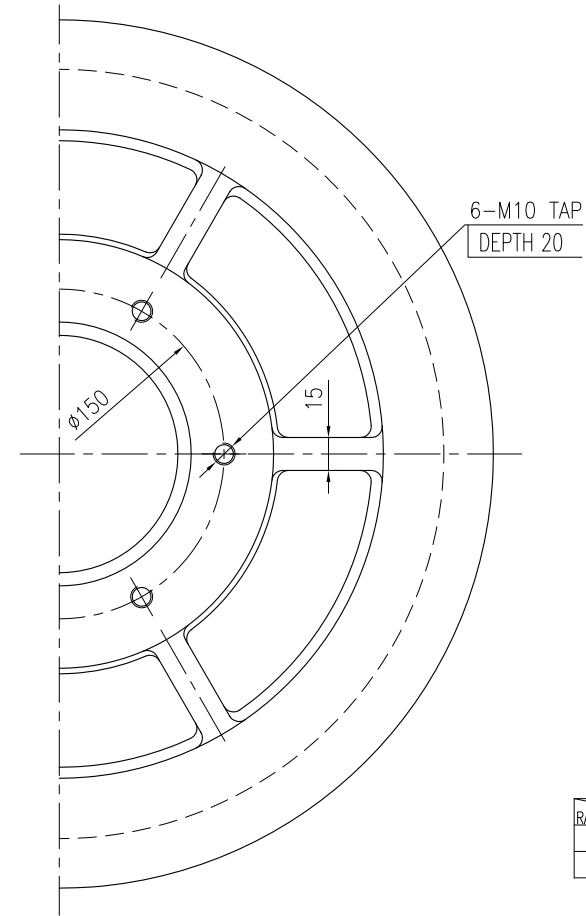
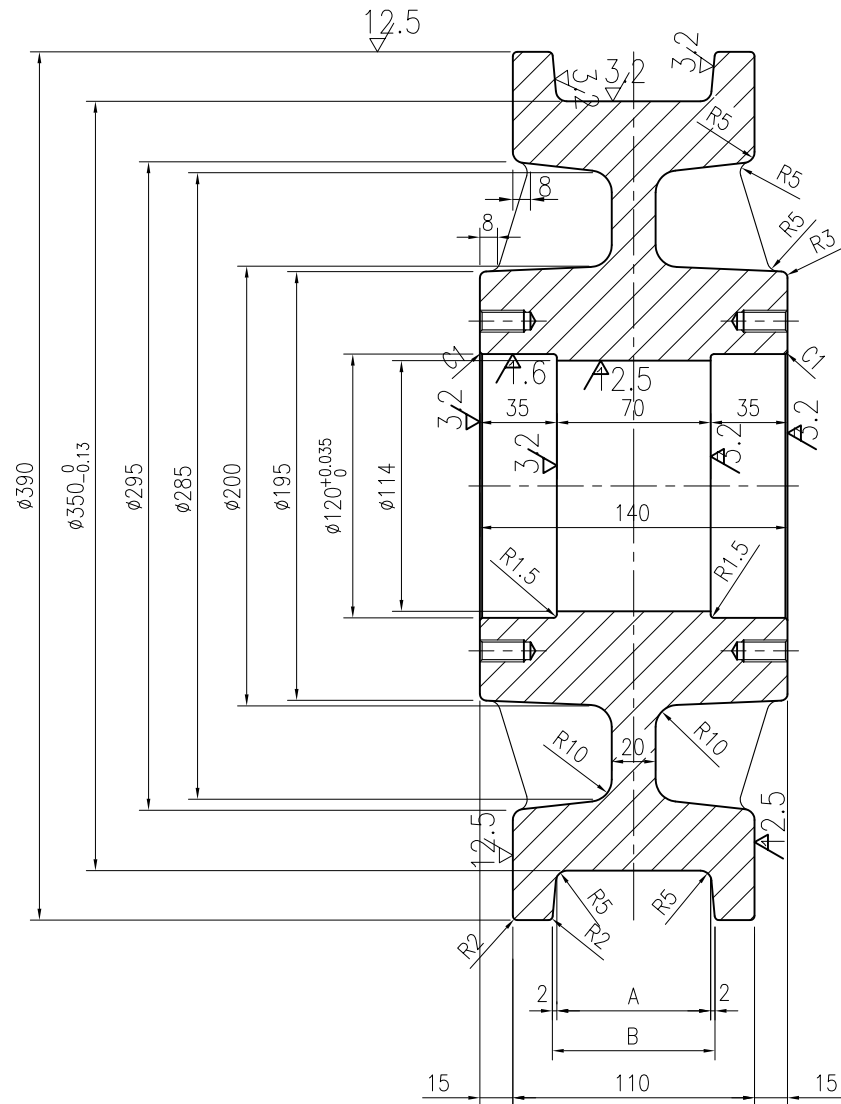


10	GREASE NIPPLE	PUR-CHASE	2			PT 1/4"
9	BOLT.SW	4T	24			M10x30 <sup>L</sup> x25 <sup>S</sup>
8	BOLT.SW	4T	8			M12x30 <sup>L</sup> x20 <sup>S</sup>
7	BOLT.SW	4T	4			M20x35 <sup>L</sup> x25 <sup>S</sup>
6	BEARING	PUR-CHASE	4			#22213
5	KEY PLATE	SS41	2			JD-S350-K
4	BEARING COVER	SS41 OR FC20	4			JD-S350-BC
3	COLLAR	FCD40	2			JD-S350-C
2	SHAFT	S45CN	2			JD-S350-S
1	FOLLOWING WHEEL	SCMn2A	2			JD-S350-F
	ASS'Y OF FOLLOWING WHEEL	-	2			

NO	DESCRIPTIONS	MT'L	SET	SET	UNIT	TOTAL	REMARKS
			QTY	QTY	WEIGHT	KG	
DATE : 2014. 02		SCALE : N/S		DRAWING No. :		JD-350-F	
DRAWN BY J. H. GWAK		DESIGNED BY J,H,GWAK		CHECKED BY		APPROVED BY D,J,SIN	
PROJECT TITLE TRAVELLING FOLLOWING DRAWING				DRAWING TITLE ø350			



JINDO HOIST CRANE.CO.LTD

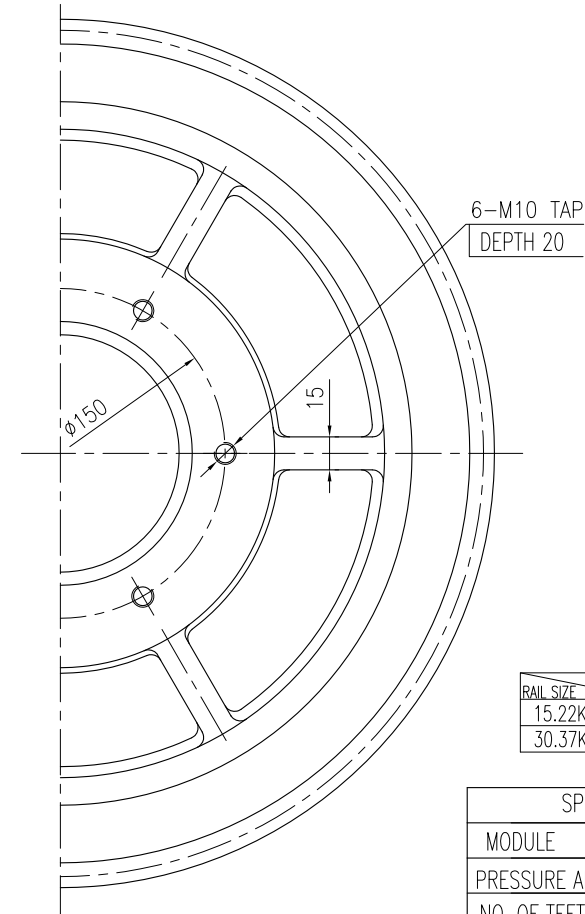
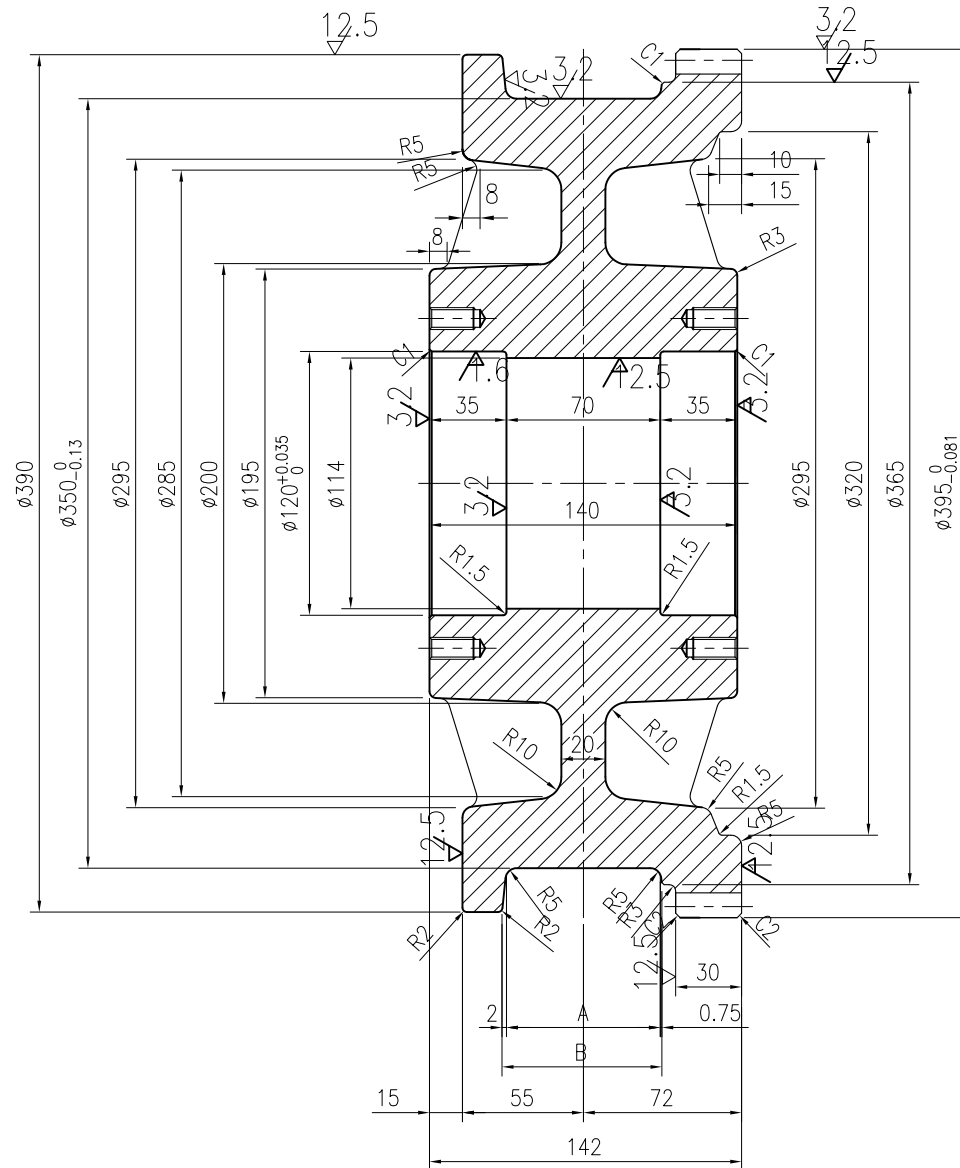


RAIL SIZE	NOTATION	A	B
15.22KG/M		70	74
30.37KG/M		70	74

NO	DESCRIPTION	MATERIAL	Q'TY	SIZE	REMARKS
	FOLLOWING WHEEL	SCMn2A	2		
DATE : 2014. 02	SCALE : N/S	DRAWING No. :		JD-350-F1	
DRAWN BY J. H. GWAK	DESIGNED BY J,H,GWAK	CHECKED BY		APPROVED BY D,J,SIN	
PROJECT TITLE TRAVELLING FOLLOWING DRAWING			DRAWING TITLE $\phi 350$		



JINDO HOIST CRANE.CO.LTD



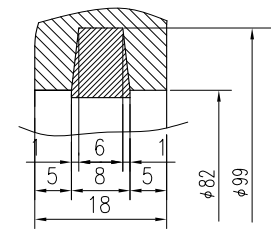
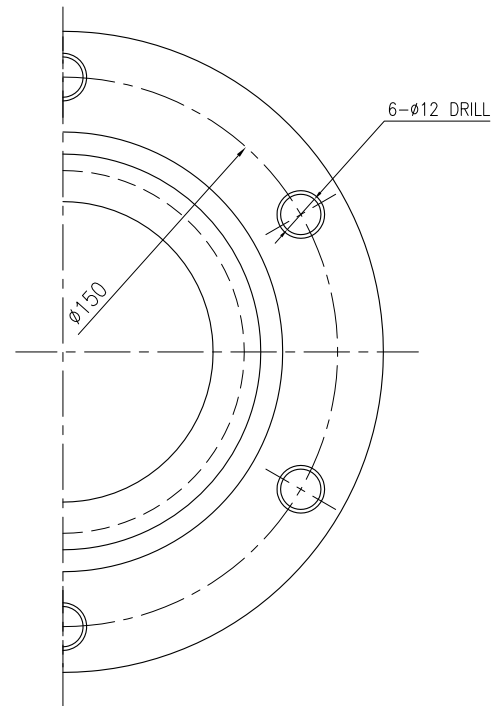
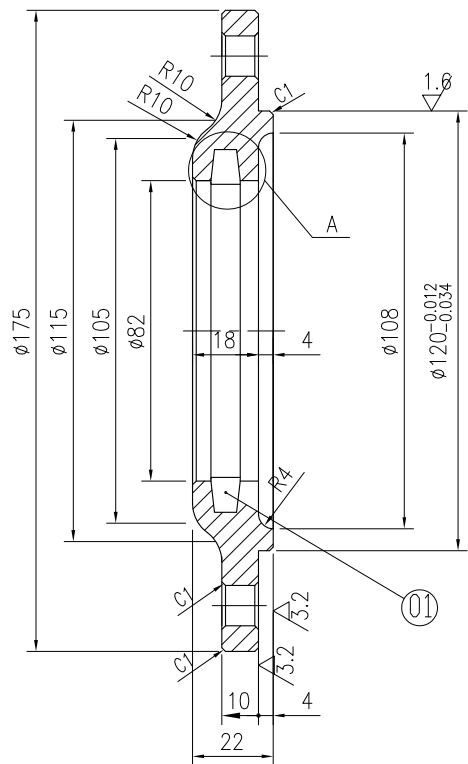
RAIL SIZE	NOTATION	A	B
15.22KG/M		70	72.75
30.37KG/M		70	72.75

SPECIFICATION	
MODULE	5
PRESSURE ANGLE	20°
NO. OF TEETH	77T
D.O.G.N OF TEETH	9T)130.857 <sup>-0.1</sup> <sub>-0.37</sub>
P.C.D	φ385

NO	DESCRIPTION	MATERIAL	Q'TY	SIZE	REMARKS
	DRIVING WHEEL	SCMn2A	2		
DATE : 2014. 02	SCALE : N/S	DRAWING No. :		JD-350-D1	
DRAWN BY J. H. GWAK	DESIGNED BY J,H,GWAK	CHECKED BY	APPROVED BY D,J,SIN		
PROJECT TITLE TRAVELLING DRIVING DRAWING			DRAWING TITLE φ350		



JINDO HOIST CRANE.CO.LTD

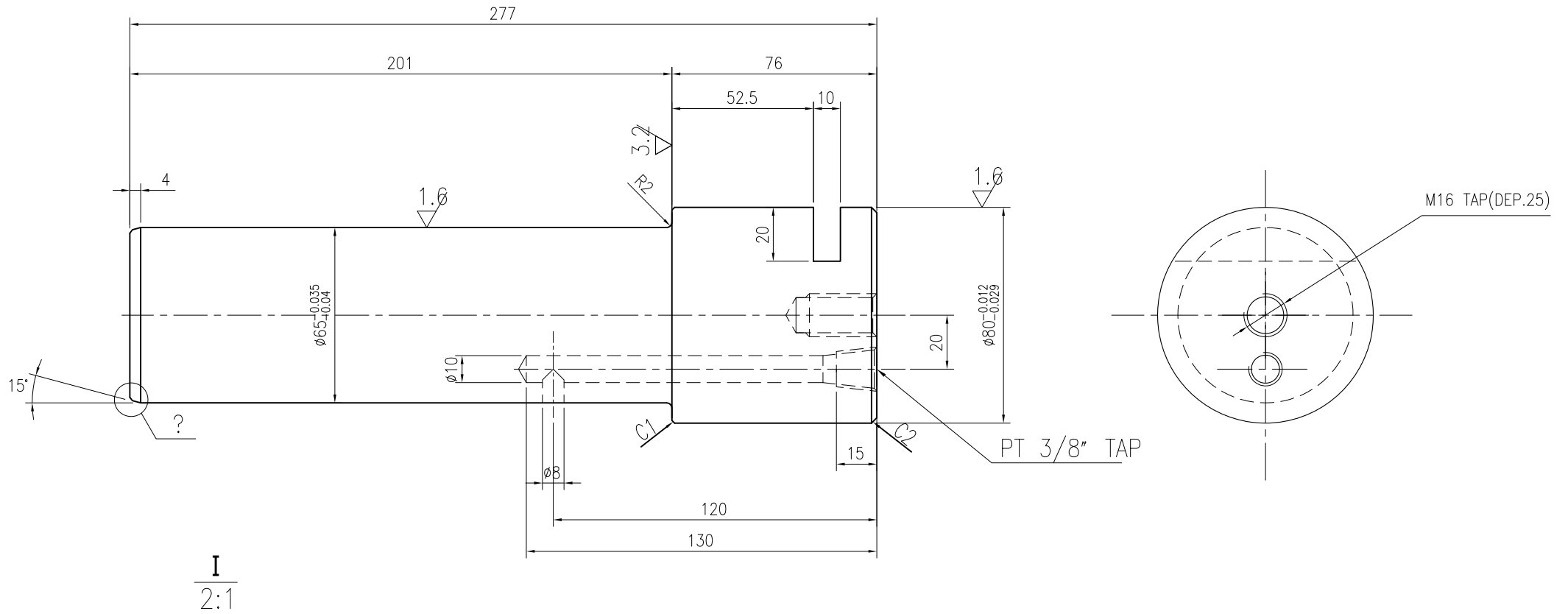


DETAIL A  
SCALE=2:1

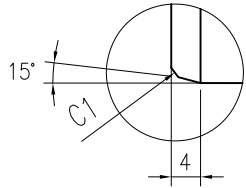
01	FELT PACKING	PURCHASE	8		7x φ80x φ99
	BEARING COVER	SS41 OR FC20	8		25t*φ180
NO	DESCRIPTION	MATERIAL	Q'TY	SIZE	REMARKS
DATE : 2014. 02		SCALE : N/S		DRAWING No. : JD-350-BC	
DRAWN BY J. H. GWAK		DESIGNED BY J,H,GWAK		CHECKED BY	APPROVED BY D,J,SIN
PROJECT TITLE TRAVELLING BEARING COVER DRAWING				DRAWING TITLE φ350	



JINDO HOIST CRANE.CO.LTD



I  
2:1

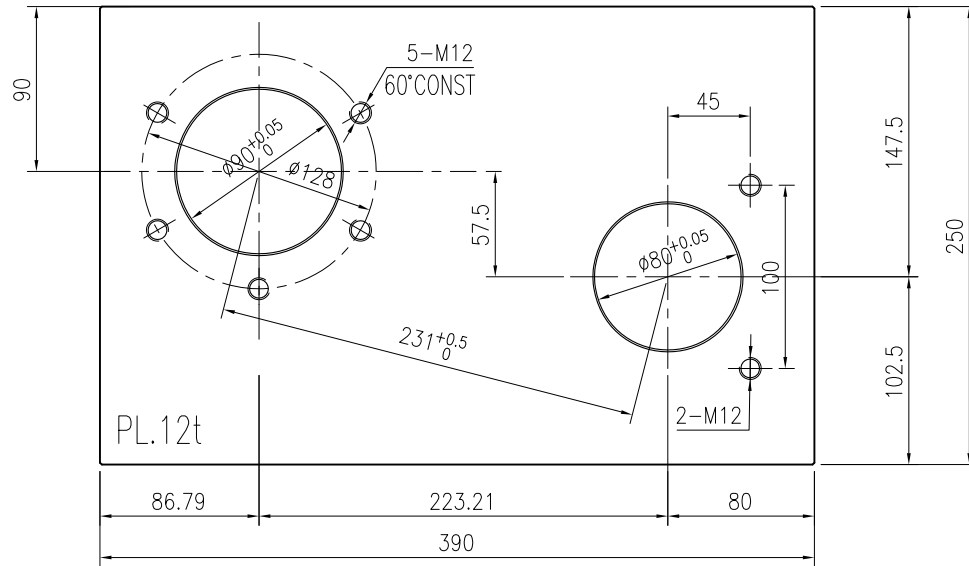


NO	SHAFT	S45CN	4		$\phi 85 \times 285L$
	DESCRIPTION	MATERIAL	Q'TY	SIZE	REMARKS
DATE :	2014. 02	SCALE :	N/S	DRAWING No. :	JD-350-S
DRAWN BY	J. H. GWAK	DESIGNED BY	J,H,GWAK	CHECKED BY	APPROVED BY D,J,SIN
PROJECT TITLE			DRAWING TITLE		
TRAVELLING SHAFT DRAWING			$\phi 350$		

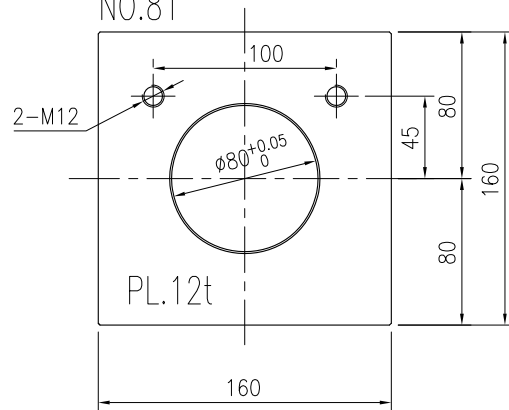


JINDO HOIST CRANE.CO.LTD

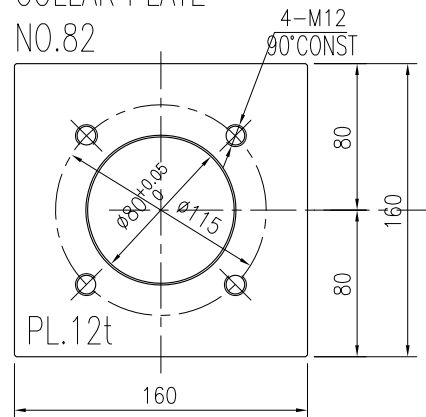
φ 350 MOTOR PLATE  
NO.80



SHAFT PLATE  
NO.81



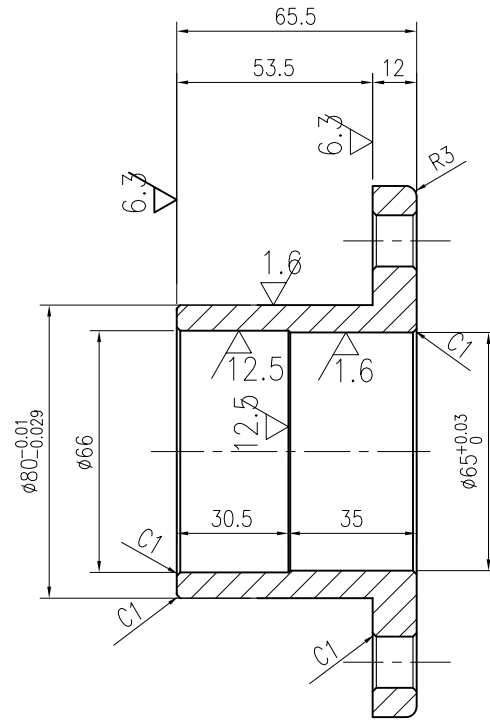
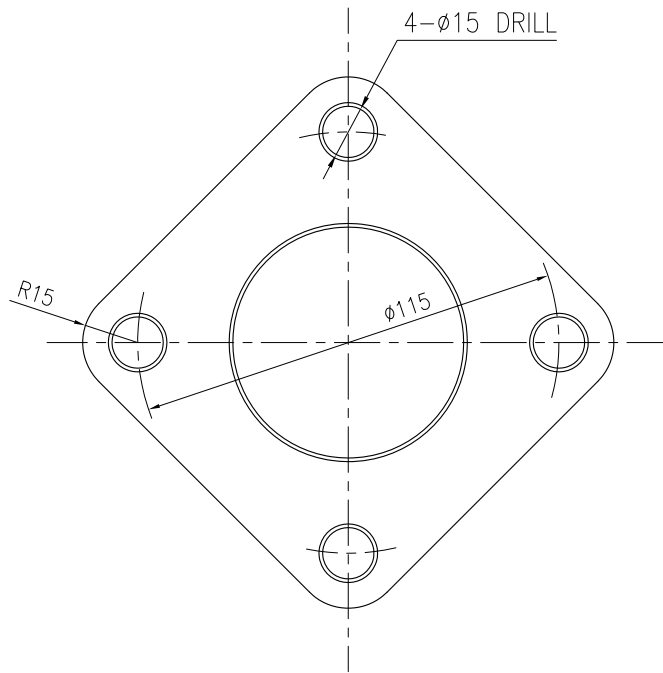
COLLAR PLATE  
NO.82



82	PL 12×160×160	SS41	4			7.74
81	PL 12×160×160	SS41	2			3.87
80	PL 12×250×390	SS41	2			15.28
	PLATE ACC'Y					
NO	DESCRIPTION	MATERIAL	Q'TY	UNIT	TOTAL	REMARKS
				WEIGHT	KG	
DATE : 2014. 02		SCALE : N/S		DRAWING No. :		JD-350-P
DRAWN BY J. H. GWAK		DESIGNED BY J,H,GWAK		CHECKED BY		APPROVED BY D,J,SIN
PROJECT TITLE TRAVELLING PLATE ACC'Y DRAWING				DRAWING TITLE φ350		



JINDO HOIST CRANE.CO.LTD



NO	DESCRIPTION	MATERIAL	Q'TY	SIZE	REMARKS
	COLLAR	FCD40	4		
DATE : 2014. 02		SCALE : N/S		DRAWING No. : JD-350-C	
DRAWN BY J. H. GWAK		DESIGNED BY J,H,GWAK		CHECKED BY	APPROVED BY D,J,SIN
PROJECT TITLE TRAVELLING COLLAR DRAWING				DRAWING TITLE $\phi 350$	



JINDO HOIST CRANE.CO.LTD